



INSTALLATION GUIDELINES | for TAMCO Blade Position Indicator

Series 1000, 1500, 8800, 9000, 9000 BF, 1000 FB, 1500 FB, 9000 FB

READ ENTIRE INSTALLATION GUIDELINE MANUAL BEFORE INSTALLING BLADE POSITION INDICATORS.

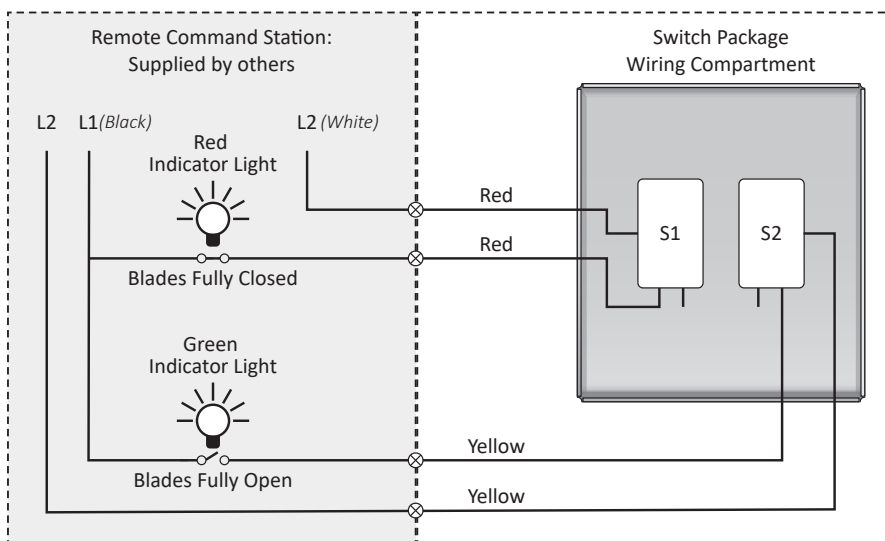
- The TAMCO Blade Position Indicator, when used with a TAMCO air control damper, provides a direct mechanical connection from the damper blade to a switching package, indicating when the damper is in the fully open or fully closed position.
- Switches are UL/ULC recognized for 15A at ½ HP, 125-250 vac, and 0.6A at 125 vdc.
- Rated for operation in temperatures ranging from -25 °C (13 °F) to 80 °C (175 °F).



GENERAL INSTALLATION NOTES

- Before installing the blade position indicator, ensure installed damper conforms to TAMCO Aluminum Damper Installation Guideline (included with damper shipment).
- These instructions are for installing the Blade Position Indicator on the right-hand side of the damper. If installing on the left-hand side, mirror the instructions and drawings provided.
- If the damper has parallel blade action, the Blade Position Indicator may be installed on any blade.
- If the damper has opposed blade action, install the Blade Position Indicator on the drive blade, or on every second blade away from the drive blade. The Blade Position Indicator cannot be installed on blades adjacent to the drive blade on an opposed blade damper.
- If a horizontal jackshaft is installed on the damper, ensure that the Blade Position Indicator's mounting bracket will fit on the frame properly.
- Refer to Drawing F before beginning installation.
- If the mounting bracket is improperly aligned, the switches may not be activated when damper blades are fully closed or open.
- Signal verification occurs when the switch is connected, either via continuity or an electrical voltage to a lamp indicator. The wires are connected to the Normally Open terminal of the switch. When the damper blade reaches its intended position, the switch closes, completing the circuit and allowing electrical flow.
- There will only be continuity to one switch when the damper is in the full open or full closed position. There will never be electrical continuity to both switches simultaneously.
- The installer must verify the continuity of the Yellow and Red wires prior to connecting to a wiring source in order to ensure a signal will be received when the damper blades are fully open or closed.

WIRING DETAIL



L1, L2 is a supply voltage compatible with lights and switches.
Standard voltage is same as actuator ordered.

Note that all technical information available on TAMCO's website at www.tamcodampers.com supersedes and takes precedence over all information contained in printed documents.

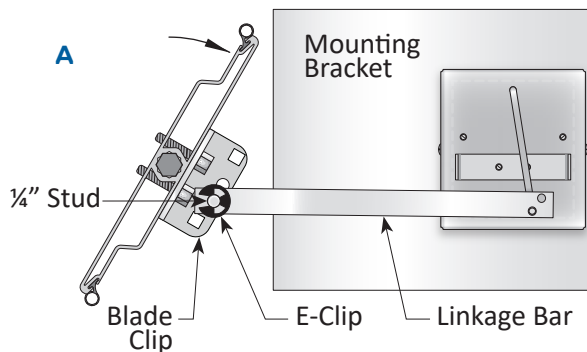
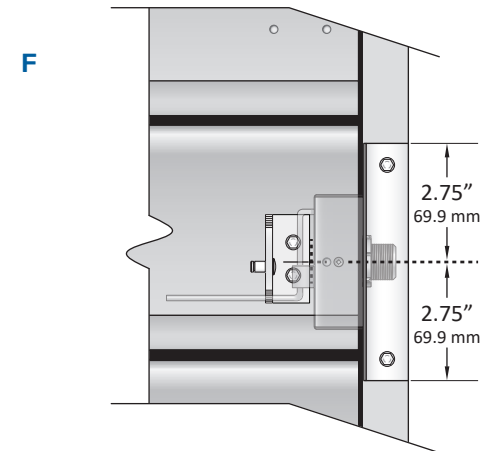
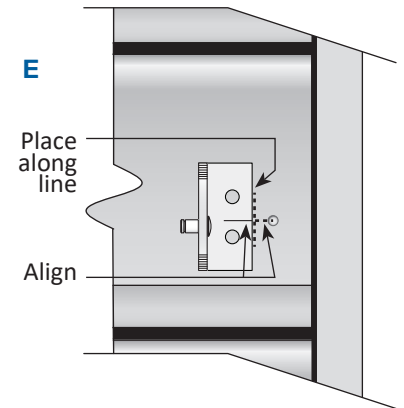
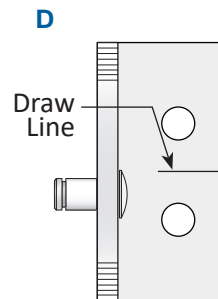
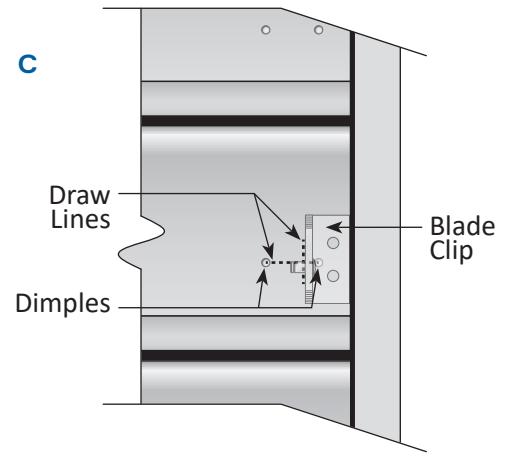
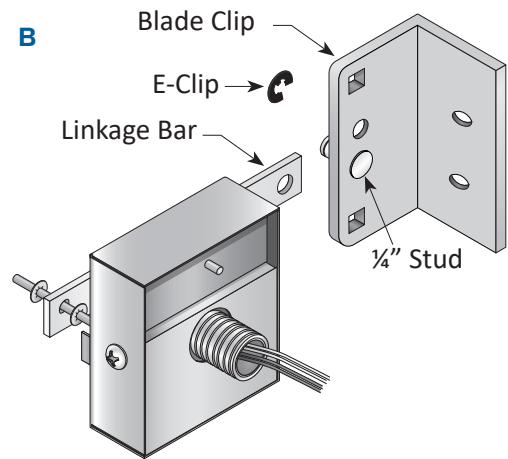
CALL TAMCO CUSTOMER SERVICE WITH ANY QUESTIONS CONCERNING TAMCO DAMPERS.

1-800-561-3449

EXERCISE CAUTION TO ENSURE FINGERS ARE NOT IN WAY OF MOVING LINKAGE PARTS OR BLADES.

INSTALLATION PROCEDURE

1. Locate the blade on which the Blade Position Indicator is to be installed. **Note:** The top of the blade must open towards the side of the damper on which the Blade Position Indicator will be installed. (Drawing A)
2. Remove the E-clip from the 1/4" stud that holds the linkage bar to the blade clip. (Drawing B)
3. Draw a line between the two 1/8" dimples on the selected blade. (Drawing C)
4. Position the blade clip on the edge of the selected blade, using it as a 1" wide spacer, and draw a 1" line along the inside edge. (Drawing C)
5. Draw a line halfway down the blade clip. This will be used to center the blade clip on the blade. (Drawing D)
6. Line up the edge of the blade clip along the 1" line. Align the center line on the blade clip with the line drawn between the dimples on the blade. (Drawing E)
7. Use two #8 x 3/4" self-tapping screws to fasten the blade clip to the blade through the two holes in the blade clip.
8. Place the mounting bracket on the damper frame so that it is centered with the dimples on the blade. The mounting bracket's edges will be 2.75" above and below the dimples. (Drawing F)
9. Secure the mounting bracket to the damper frame with two #8 x 3/4" self-tapping screws.
10. Reconnect the linkage bar to the 1/4" stud. Ensure that the nylon washer remains between the linkage bar and the blade clip. Snap the E-clip on the 1/4" stud, to secure the linkage bar in place. (Drawings A & B)
11. Using a continuity meter, rotate the damper blades to the fully open position. Check the red wires for continuity if the Blade Position Indicator is on the right-hand side of the damper. If the Blade Position Indicator is on the left-hand side of the damper, check the yellow wires for continuity.
12. Rotate the damper blades to the fully closed position and check the remaining wires for continuity.



BLADE POSITION INDICATOR

INSTALLATION GUIDELINES



SPX ENGINEERED AIR MOVEMENT

80 Lorne Street
Smiths Falls, ON K7A 5J7, Canada
800 561 3449
tamcodampers.com

TA-IOM-BPI-24 | ISSUED 01/2024
© 2024 SPX Engineered Air Movement | All rights reserved
In the interest of technological progress, all products are
subject to design and/or material change without notice.

