

HORIZONTAL JACKSHAFTS

FOR CONTROL DAMPERS

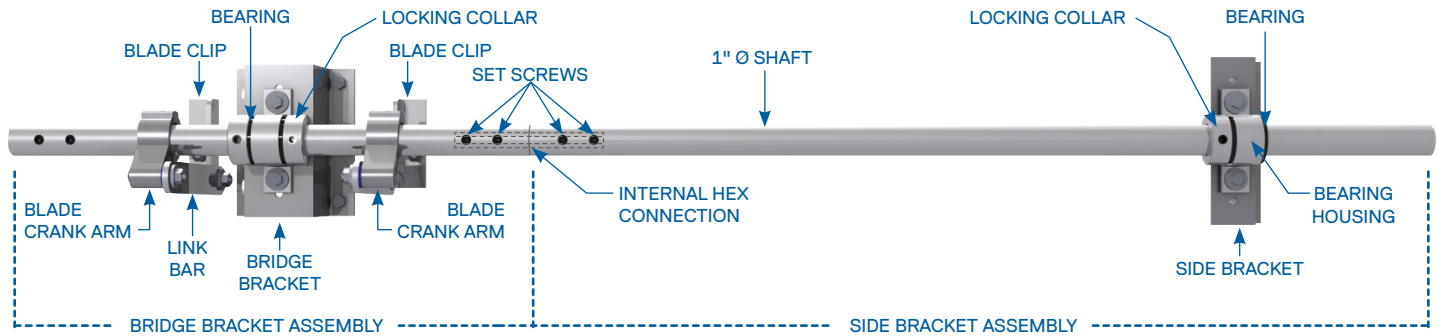
engineering data
and specifications



HORIZONTAL JACKSHAFT | for Multiple-Section Control Dampers

Series 1000, 1500, 9000, 9000 BF

REFER TO ALUMINUM DAMPER STANDARD CONFIGURATIONS FOR APPLICABILITY.



STANDARD HORIZONTAL JACKSHAFT

- For use with Series 1000, 1500, 9000, and 9000 BF control dampers.
- Bridge brackets and side brackets are mill finish extruded aluminum.
- 1" (25.4 mm) I.D. diameter bearings are high-strength, abrasion and impact resistant thermoplastic polyamide.
- Bearing housings are mill finish extruded aluminum.
- Blade clips are mill finish extruded aluminum. They are mounted directly to U-bolts and secured to drive blade.
- Shaft is 1" (25.4 mm) diameter anodized extruded aluminum rod.
- Blade crank arms, locking collars, and link bars are mill finish extruded aluminum.
- All non-aluminum parts are zinc-plated steel.
- If jackshafts are required, all standard dampers and those with the SC or ECT Options are supplied with Standard horizontal jackshafts. If Salt Water Resistance horizontal jackshafts are desired instead, this must be specified at the time of order.

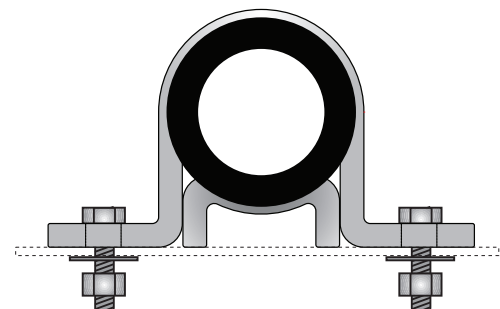
SW – SALT WATER RESISTANCE OPTION HORIZONTAL JACKSHAFT

- For use with Series 1000, 1500, and 9000, 9000 BF control dampers with SW – Salt Water Resistance or MR – Moisture Resistance Options.
- Bridge brackets and side brackets are anodized extruded aluminum.
- 1" (25.4 mm) I.D. diameter bearings are high-strength, abrasion and impact resistant thermoplastic polyamide.
- Bearing housings are anodized extruded aluminum.
- Blade clips are anodized extruded aluminum. They are mounted directly to U-bolts and secured to drive blade.
- Shaft is 1" (25.4 mm) diameter anodized extruded aluminum rod.
- Blade crank arms, locking collars, and link bars are anodized extruded aluminum.
- All non-aluminum parts are stainless steel.
- If jackshafts are required, all dampers with the SW or MR Options are supplied with Salt Water Resistance horizontal jackshafts. If Standard horizontal jackshafts are desired instead, this must be specified at the time of order.

RECOMMENDED MAINTENANCE

- Thermoplastic polyamide bearings are self-lubricating and do not require any maintenance.
- Jackshaft should be cleaned at least once a year, or as needed depending upon the environmental conditions. This can be done with the use of compressed air to loosen and remove any accumulated dirt or dust. If this does not clean off all the dust material, you may use a domestic strength steam cleaner, ensuring that the loosened dirt and water droplets are completely blown out with compressed air.

THERMOPLASTIC POLYAMIDE BEARING WITH EXTRUDED ALUMINUM HOUSING

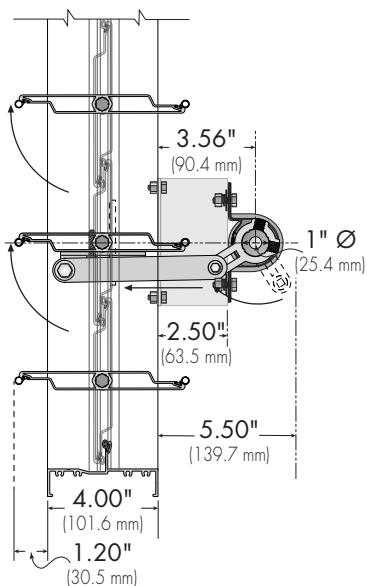


HORIZONTAL JACKSHAFT | for Multiple-Section Control Dampers

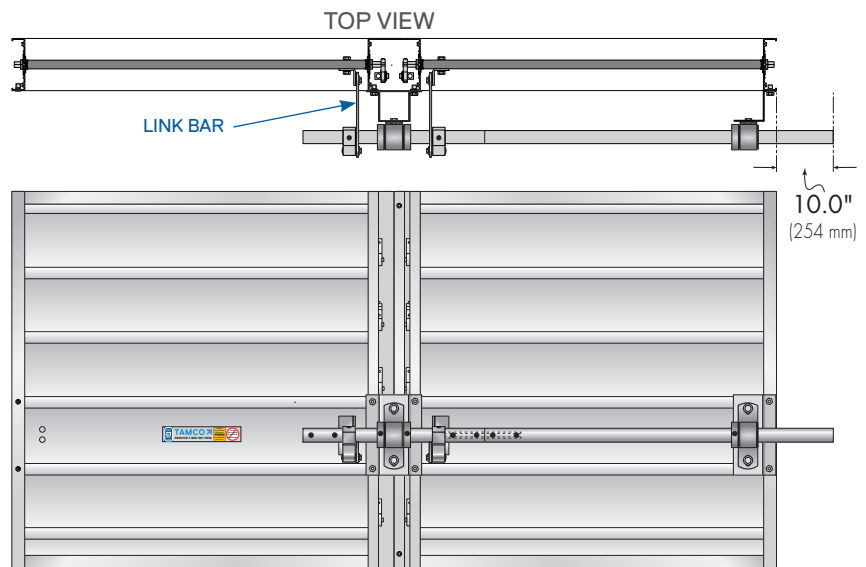
Series 1000, 1500, 9000, 9000 BF

RECOMMENDATION

- Do not change the factory placement of blade crank arms along the 1" (25.4 mm) diameter shaft within the jackshaft assembly, as these are optimally aligned for connection to the U-bolts on the damper blades.



SIDE VIEW

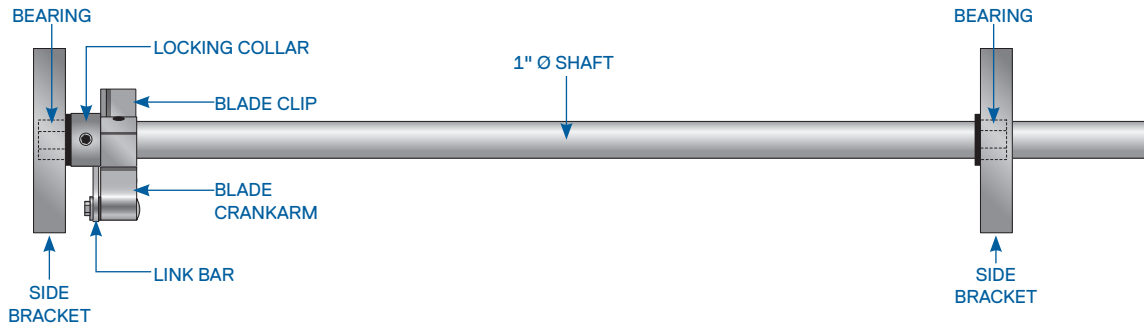


FRONT VIEW

- Horizontal jackshafts are required whenever 30 ft² (2.79 m²) of damper surface area, or more, are to be actuated from any one motor location. They are also used if you wish to connect three (3) horizontal damper sections, even if the total surface area is less than 30 ft² (2.79 m²).
- Jackshafts can be mounted so as to drive a two (2), three (3), or four (4) section wide damper from either the left or right side. (*Right side shown above.*)
- Optional motor crankarm can be ordered as a separate part.
- Jackshafts are mounted directly over the drive blade in order to minimize the length of the link bar. The shortness and thickness of the link bar prevents flexing and adds to positive control.
- A maximum of four sections can be connected with a single horizontal jackshaft, as standard. If more than four horizontal sections are to be connected using a jackshaft, contact TAMCO Customer Service.

HORIZONTAL JACKSHAFT | for Single-Section Control Dampers

Series 1000, 1500, 9000, 9000 BF



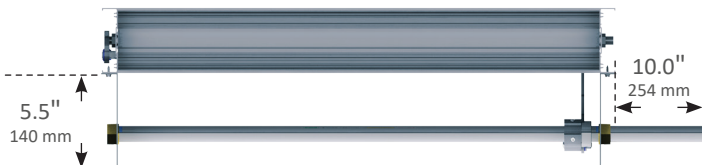
STANDARD HORIZONTAL JACKSHAFT

- For use with Series 1000, 1500, 9000, and 9000 BF control dampers.
- Side brackets are mill finish aluminum.
- 1" (25.4 mm) I.D. diameter hex bearings are bronze-oilite.
- Blade clips are mill finish extruded aluminum. They are mounted directly to U-bolts and secured to drive blade.
- Shaft is 1" (25.4 mm) diameter anodized extruded aluminum rod.
- Blade crank arms, locking collars, and link bars are mill finish extruded aluminum.
- All non-aluminum parts are zinc-plated steel.
- If jackshafts are required, all standard dampers and those with the ET, SC or ECT Options are supplied with Standard horizontal jackshafts. If Salt Water Resistance horizontal jackshafts are desired instead, this must be specified at the time of order.

SW – SALT WATER RESISTANCE OPTION HORIZONTAL JACKSHAFT

- For use with Series 1000, 1500, and 9000, 9000 BF control dampers with SW – Salt Water Resistance or MR – Moisture Resistance Options.
- Side brackets are anodized aluminum.
- 1" (25.4 mm) I.D. diameter hex bearings are bronze-oilite.
- Blade clips are anodized aluminum. They are mounted directly to U-bolts and secured to drive blade.
- Shaft is 1" (25.4 mm) diameter anodized extruded aluminum rod.
- Blade crank arms, locking collars, and link bars are anodized extruded aluminum.
- All non-aluminum parts are stainless steel.
- If jackshafts are required, all dampers with the SW or MR Options are supplied with Salt Water Resistance horizontal jackshafts. If Standard horizontal jackshafts are desired instead, this must be specified at the time of order.

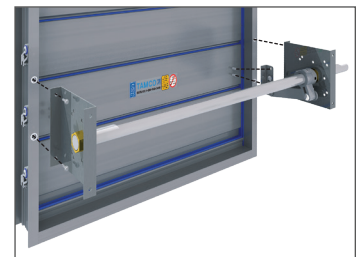
TOP VIEW



FRONT VIEW

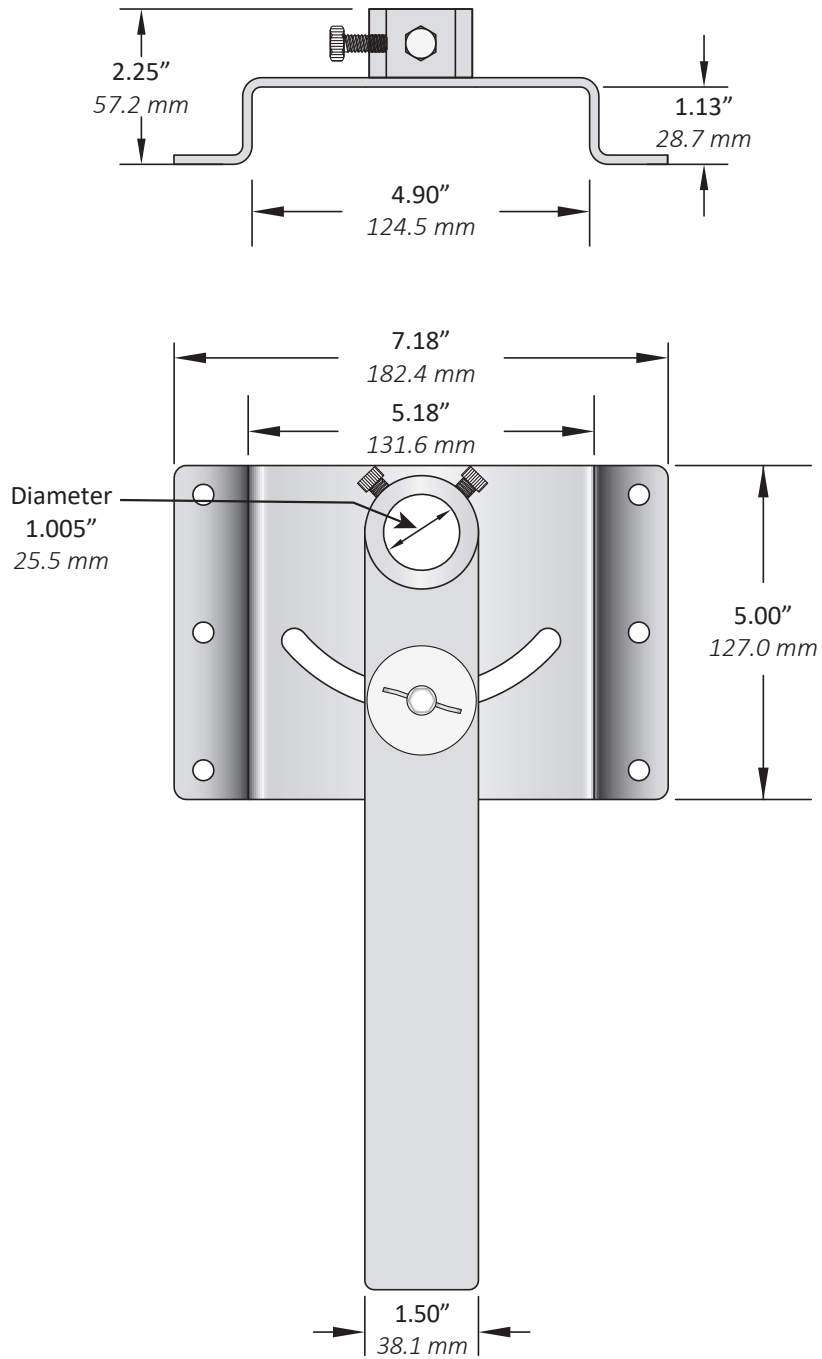
RECOMMENDATION

- Do not change the factory placement of blade crank arms along the 1" (25.4 mm) diameter shaft within the jackshaft assembly, as these are optimally aligned for connection to the U-bolts on the damper blades.



RECOMMENDED MAINTENANCE

- Bronze-oilite hex bearings are self-lubricating and do not require any maintenance.
- Jackshaft should be cleaned at least once a year, or as needed depending upon the environmental conditions. This can be done with the use of compressed air to loosen and remove any accumulated dirt or dust. If this does not clean off all the dust material, you may use a domestic strength steam cleaner, ensuring that the loosened dirt and water droplets are completely blown out with compressed air.



1. Base and handle assembly are 10 ga. (3.2 mm) zinc chromate plated steel.
2. Manual locking quadrant accommodates 95° of rotation.

HORIZONTAL JACKSHAFTS

ENGINEERING DATA AND SPECIFICATIONS

FOR ADDITIONAL INFORMATION REFER TO:



JACKSHAFT INSTALLATION GUIDELINES
UNDER THE DOCUMENTS TAB



INSTALLATION GUIDELINE
VIDEOS

SPX ENGINEERED AIR MOVEMENT

80 Lorne Street
Smiths Falls, ON K7A 5J7, Canada
800 561 3449
tamcodampers.com

TA-JSH-TECH-24 | ISSUED 01/2024
© 2024 SPX Engineered Air Movement | All rights reserved
In the interest of technological progress, all products are
subject to design and/or material change without notice.

