

SERIES 1000 MZ

TWO-DECK MULTIZONE
AIR-FOIL CONTROL DAMPER

TAMCO 



EXPERIENCE TRUE EXCELLENCE IN SERVICE, QUALITY,
AND MAINTENANCE-FREE PERFORMANCE.

SERIES 1000 MZ | Two-Deck Multizone

Air-Foil Control Damper

PURPOSE-BUILT DESIGN

- Blades are cored to appropriate angles to ensure 90° operation between decks.
- Internal zone dividers are designed to accept duct connections.
- Two-Deck Multizones are available with drives on either the left-hand or the right-hand side. (*Choice of right- or left-hand drive must be made at the time the order is placed.*)
- Increased free area achieved by reducing the width of the centre frames and by introduction of low-profile internal zone dividers.

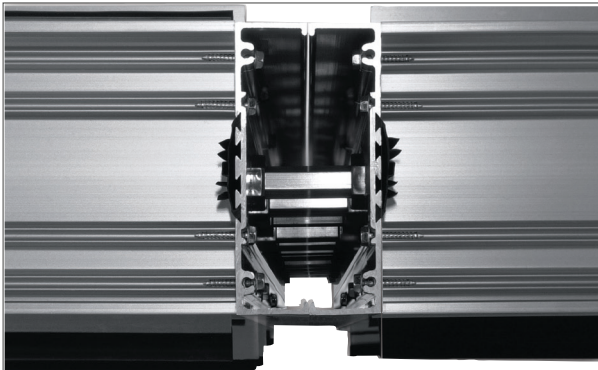
INTER-DECK SOLID CONNECTION

- Connections between decks are hard alloy aluminum (6005-T5) rods.
- Aluminum rod is stamped into one deck and U-bolted to the opposite deck.
- No internal mechanism to loosen, fail, or omit.
- Transmission of torque, or stroke, is direct and without losses.
- Connections between decks will not develop any wear or play.

SPLITTERS BETWEEN ZONES



VIEW OF UNINTERRUPTED LINKAGE BETWEEN DECKS



SERIES 1000 MZ | Two-Deck Multizone

Air-Foil Control Damper

CUSTOM CHOICES

- In order to meet custom requirements for the sizing of individual zones, combinations of 6" (152.4 mm), 5" (127 mm), and 4" (101.6 mm) deep blades are used.
- Decks are manufactured to customer-specified dimensions.
- Decks can be spaced apart from each other and linkage between decks will be lengthened accordingly.

ALUMINUM STRENGTH AND DURABILITY

- Aluminum extrusions allow for intricate design features not possible with roll or brake formed galvanized steel.
- Aluminum construction allows for additional strength by extruding internal supports and thicker radii.
- Aluminum dampers provide a prolonged and rust-free operational life over galvanized steel types.
- Aluminum oxidizes to form a protective film. If the surface is scratched, the film reforms.
(Standard damper is produced with a mill finish.)

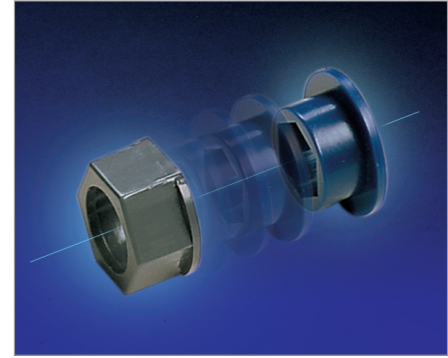
MAINTENANCE-FREE PERFORMANCE ACHIEVED

- Dampers are assembled using slip-proof linkage components that keep blades aligned as per factory adjustment.
- Hexagon design feature of linkage and pivot elements allow for flat-on-flat press fits that eliminate play and wear.
- Hard alloy aluminum (6005-T5) linkage crank arm and pivot pin are doubly secured by pincer-action and fastener.
- Large diameter (1 1/32" [8.73 mm]) hard alloy aluminum (6005-T5) linkage rod connects the crank arms, which allows for a penetrating grip by the cup-point fastener.
(Cup-point trunnion set screw creates a compression hard spot where it secures to the linkage rod.)
- Trunnions are zinc-plated to provide a hard, smooth and long-lasting rotating surface.

NO STANDARD CONFIGURATIONS ARE AVAILABLE FOR SERIES 1000 MZ.

CALL TAMCO CUSTOMER SERVICE FOR CONFIGURATIONS AND DRAWINGS.

1-800-561-3449



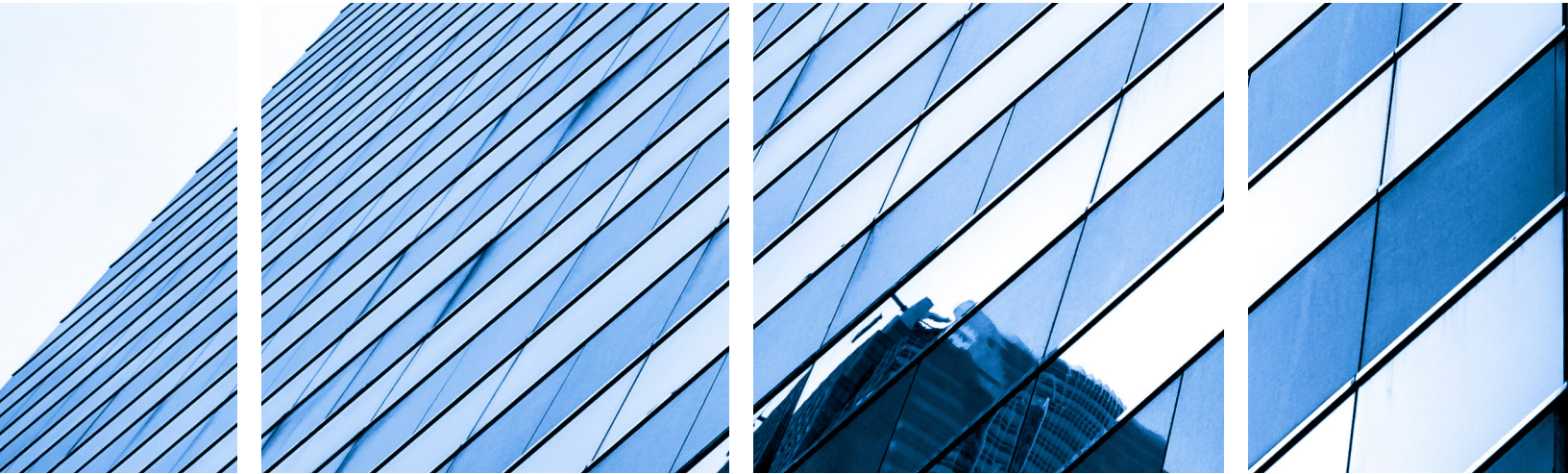
DEPENDABLE "DUAL BEARING SYSTEM"

- TAMCO bearings consist of polycarbonate and acetal copolymer (Celcon) engineered thermal plastic resins.
- Dual bearing system is self-sealing, self-lubricating, and non-absorbent, which results in a totally maintenance-free performance.
- Bearing materials meet or exceed tensile strength of 8,800 psi (60,674 kPa) and flexural strength of 12,000 psi (82,738 kPa).
- Tensile impact strength of Celcon is 70 ft-lb/in² (147.1 kN-m/m²) and 145 ft-lb/in² (304.7 kN-m/m²) for polycarbonate.
- TAMCO's bearing-to-bearing arrangement eliminates action between metal-on-metal and metal-on-plastic riding surfaces. *(Metal-on-metal, bronze or oil-lite bearings and metal-on-plastic nylon bearings have traditionally been one of the weakest links in damper operation, requiring regular lubrication or eventual replacement.)*
- TAMCO's "Dual Bearing System" has a service life of over 20 years under normal conditions and operation, and when installed in accordance with TAMCO Installation Guidelines.

TOTAL CONTROL PERFORMANCE

- TAMCO's design and material matrix provides for durable and dependable components.
- TAMCO's exacting quality control and sound workmanship ensure product integrity.
- TAMCO provides and has available installation guidelines, technical support and a toll-free customer service number. *(Every TAMCO damper displays the 1-800-561-3449 customer service number.)*
- TAMCO products and personnel are your guarantee of total air control performance.

SERIES 1000 MZ



SPX ENGINEERED AIR MOVEMENT

80 Lorne Street
Smiths Falls, ON K7A 5J7, Canada
800 561 3449
tamcodampers.com

TA-1000MZ-24 | ISSUED 01/2024
© 2024 SPX Engineered Air Movement | All rights reserved
In the interest of technological progress, all products are
subject to design and/or material change without notice.

SPX
TECHNOLOGIES