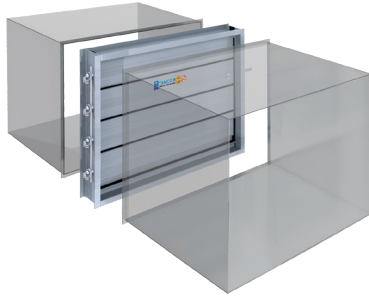


FEET SQUARED

FLANGED TO DUCT

DARK GREY LINE IN CHARTS



**INSTALLED
IN DUCT**

WHITE LINE IN CHARTS



**SQUARE TO ROUND
TRANSITION**

PALE GREY LINE IN CHARTS



NOTE:

To reduce pressure drop, use Flanged to Duct install type for sizes under 9 ft² (0.83 m²).

SP dampers sized for duct openings exceeding 37 3/4" (959 mm) in height are equipped with a brace at mid-height, to strengthen and maintain air leakage tolerances.

		Width (inches)									
		12	24	36	48	60	72	84	96	108	120
Height (inches)	12	0.667	1.333	2.000	2.666	3.332	3.777	4.443	5.110	5.776	6.443
		0.325	0.783	1.241	1.699	2.157	2.501	2.959	3.417	3.875	4.333
		0.624	n/a	n/a	n/a	n/a	n/a	n/a	n/a	n/a	n/a
	24	1.556	3.111	4.667	6.223	7.778	8.815	10.371	11.927	13.482	15.038
		0.954	2.302	3.649	4.996	6.344	7.354	8.702	10.049	11.396	12.744
		n/a	2.653	n/a	n/a	n/a	n/a	n/a	n/a	n/a	n/a
	36	2.306	4.612	6.918	9.224	11.530	13.068	15.374	17.680	19.986	22.292
		1.584	3.821	6.057	8.294	10.530	12.208	14.444	16.681	18.917	21.154
		n/a	n/a	6.059	n/a	n/a	n/a	n/a	n/a	n/a	n/a
	48	3.195	6.391	9.586	12.781	15.976	18.106	21.302	24.497	27.692	30.887
		2.155	5.197	8.240	11.282	14.324	16.606	19.648	22.691	25.733	28.775
		n/a	n/a	n/a	10.543	n/a	n/a	n/a	n/a	n/a	n/a
60	4.084	8.169	12.253	16.338	20.422	23.145	27.229	31.314	35.398	39.483	
	2.746	6.622	10.498	14.374	18.250	21.157	25.033	28.909	32.785	36.661	
	n/a	n/a	n/a	n/a	15.223	n/a	n/a	n/a	n/a	n/a	
72	4.974	9.947	14.921	19.894	23.210	28.184	33.157	38.131	43.104	48.077	
	3.375	8.141	12.906	17.671	21.245	26.010	30.776	35.541	40.311	45.077	
	n/a	n/a	n/a	n/a	n/a	n/a	n/a	n/a	n/a	n/a	
84	5.446	10.891	16.337	21.782	27.228	30.858	36.303	41.749	47.194	52.640	
	3.710	8.947	14.184	19.421	24.658	28.586	33.823	39.061	44.298	49.535	
	n/a	n/a	n/a	n/a	n/a	n/a	n/a	n/a	n/a	n/a	
96	6.224	12.448	18.672	24.895	31.119	35.268	41.492	47.716	53.940	60.164	
	4.339	10.466	16.592	22.718	28.845	33.440	39.566	45.692	51.819	57.945	
	n/a	n/a	n/a	n/a	n/a	n/a	n/a	n/a	n/a	n/a	
108	7.113	14.226	21.339	28.452	35.565	40.307	47.420	54.533	61.646	68.759	
	4.969	11.985	19.000	26.016	33.031	38.293	45.308	52.324	59.339	66.355	
	n/a	n/a	n/a	n/a	n/a	n/a	n/a	n/a	n/a	n/a	

METERS SQUARED

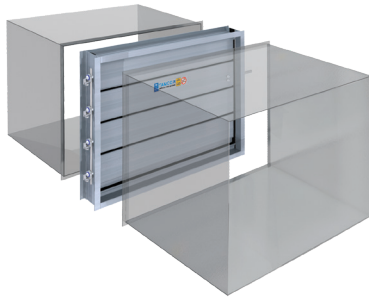
		Width (mm)									
		305	610	915	1220	1525	1829	2134	2439	2744	3048
Height (mm)	305	0.062	0.124	0.186	0.248	0.310	0.351	0.413	0.475	0.537	0.599
		0.030	0.073	0.115	0.158	0.200	0.232	0.275	0.317	0.360	0.403
		0.058	n/a	n/a	n/a	n/a	n/a	n/a	n/a	n/a	n/a
	610	0.145	0.289	0.434	0.578	0.723	0.819	0.963	1.108	1.253	1.397
		0.089	0.214	0.339	0.464	0.589	0.683	0.808	0.934	1.059	1.184
		n/a	0.246	n/a	n/a	n/a	n/a	n/a	n/a	n/a	n/a
	915	0.214	0.428	0.643	0.857	1.071	1.214	1.428	1.643	1.857	2.071
		0.147	0.355	0.563	0.771	0.978	1.134	1.342	1.550	1.757	1.965
		n/a	n/a	0.563	n/a	n/a	n/a	n/a	n/a	n/a	n/a
	1220	0.297	0.594	0.891	1.187	1.484	1.682	1.979	2.276	2.573	2.869
		0.200	0.483	0.766	1.048	1.331	1.543	1.825	2.108	2.391	2.673
		n/a	n/a	n/a	0.979	n/a	n/a	n/a	n/a	n/a	n/a
1525	0.379	0.759	1.138	1.518	1.897	2.150	2.530	2.909	3.289	3.668	
	0.255	0.615	0.975	1.335	1.695	1.966	2.326	2.686	3.046	3.406	
	n/a	n/a	n/a	n/a	1.414	n/a	n/a	n/a	n/a	n/a	
1829	0.462	0.924	1.386	1.848	2.156	2.618	3.080	3.542	3.850	4.313	
	0.314	0.756	1.199	1.642	1.974	2.416	2.859	3.302	3.597	4.040	
	n/a	n/a	n/a	n/a	n/a	n/a	n/a	n/a	n/a	n/a	
2134	0.506	1.012	1.518	2.024	2.530	2.867	3.373	3.879	4.384	4.890	
	0.345	0.831	1.318	1.804	2.291	2.656	3.142	3.629	4.115	4.602	
	n/a	n/a	n/a	n/a	n/a	n/a	n/a	n/a	n/a	n/a	
2439	0.578	1.156	1.735	2.313	2.891	3.277	3.855	4.433	5.011	5.589	
	0.403	0.972	1.541	2.111	2.680	3.107	3.676	4.245	4.814	5.383	
	n/a	n/a	n/a	n/a	n/a	n/a	n/a	n/a	n/a	n/a	
2744	0.661	1.322	1.982	2.643	3.304	3.745	4.405	5.066	5.727	6.388	
	0.462	1.113	1.765	2.417	3.069	3.558	4.209	4.861	5.513	6.165	
	n/a	n/a	n/a	n/a	n/a	n/a	n/a	n/a	n/a	n/a	

PERCENTAGE

		Width (inches)									
		12	24	36	48	60	72	84	96	108	120
Height (inches)	12	66.70	66.65	66.67	66.65	66.64	62.95	63.47	63.88	64.18	64.43
		32.50	31.15	41.37	42.48	43.14	41.68	42.27	42.71	43.06	43.33
		62.40	n/a	n/a	n/a	n/a	n/a	n/a	n/a	n/a	n/a
	24	77.80	77.78	77.78	77.79	77.78	73.46	74.08	74.54	74.90	75.19
		47.70	57.55	60.82	62.45	63.44	61.28	62.16	62.81	63.31	63.72
		n/a	66.34	n/a	n/a	n/a	n/a	n/a	n/a	n/a	n/a
	36	76.87	76.87	76.87	76.87	76.87	72.60	73.21	73.67	74.02	74.31
		52.80	63.68	67.30	69.12	70.20	67.82	68.78	69.50	70.06	70.51
		n/a	n/a	67.32	n/a	n/a	n/a	n/a	n/a	n/a	n/a
	48	79.88	79.89	79.88	79.88	79.88	75.44	76.08	76.55	76.92	77.22
		53.88	64.96	68.67	70.51	71.62	69.19	70.17	70.91	71.48	71.94
		n/a	n/a	n/a	67.32	n/a	n/a	n/a	n/a	n/a	n/a
60	81.68	81.69	81.69	81.69	81.69	77.15	77.80	78.29	78.66	78.97	
	54.92	66.22	69.99	71.87	73.00	70.52	71.52	72.27	72.86	73.32	
	n/a	n/a	n/a	n/a	67.32	n/a	n/a	n/a	n/a	n/a	
72	82.90	82.89	82.89	82.89	82.89	77.37	78.29	78.95	79.44	79.77	
	56.25	67.84	71.70	73.63	70.82	72.25	73.28	74.04	74.70	75.27	
	n/a	n/a	n/a	n/a	n/a	n/a	n/a	n/a	n/a	n/a	
84	77.80	77.79	77.80	77.79	77.79	73.47	74.09	74.55	74.91	75.20	
	53.00	63.91	67.54	69.36	70.45	68.06	69.03	69.75	70.31	70.76	
	n/a	n/a	n/a	n/a	n/a	n/a	n/a	n/a	n/a	n/a	
96	77.80	77.80	77.80	77.80	77.80	73.48	74.09	74.56	74.92	75.21	
	54.24	65.41	69.13	70.99	72.11	69.67	70.65	71.39	71.97	72.43	
	n/a	n/a	n/a	n/a	n/a	n/a	n/a	n/a	n/a	n/a	
108	79.03	79.03	79.03	79.03	79.03	74.64	75.27	75.74	76.11	76.40	
	55.21	66.58	70.37	72.27	73.40	70.91	71.92	72.67	73.26	73.73	
	n/a	n/a	n/a	n/a	n/a	n/a	n/a	n/a	n/a	n/a	

FLANGED TO DUCT

DARK GREY LINE IN CHARTS



INSTALLED IN DUCT

WHITE LINE IN CHARTS



SQUARE TO ROUND TRANSITION

PALE GREY LINE IN CHARTS



NOTE:

Series 1500 dampers are not available as NP – Narrow Profile.

To reduce pressure drop, use Flanged to Duct install type for sizes under 9 ft² (0.83 m²).

NP dampers sized for duct openings exceeding 35 3/4" (908 mm) in height are equipped with a brace at mid-height, to strengthen and maintain air leakage tolerances.

FEET SQUARED

		Width (inches)									
		12	24	36	48	60	72	84	96	108	120
Height (inches)	12	0.611	1.222	1.833	2.444	3.055	3.463	4.074	4.685	5.296	5.907
		0.325	0.783	1.241	1.699	2.157	2.501	2.959	3.417	3.875	4.333
		0.583	n/a	n/a	n/a	n/a	n/a	n/a	n/a	n/a	n/a
24	1.359	2.779	4.168	5.558	6.947	7.873	9.263	10.652	12.042	13.431	
	0.876	2.112	3.349	4.585	5.822	6.749	7.986	9.222	10.459	11.695	
	n/a	2.477	n/a	n/a	n/a	n/a	n/a	n/a	n/a	n/a	
36	2.140	4.280	6.420	8.559	10.699	12.126	14.266	16.405	18.545	20.685	
	1.466	3.537	5.607	7.677	9.747	11.300	13.370	15.441	17.511	19.581	
	n/a	n/a	5.554	n/a	n/a	n/a	n/a	n/a	n/a	n/a	
48	2.974	5.947	8.921	11.894	14.868	16.850	19.824	22.797	25.771	28.745	
	1.959	4.724	7.489	10.254	13.020	15.094	17.859	20.624	23.389	26.155	
	n/a	n/a	n/a	9.867	n/a	n/a	n/a	n/a	n/a	n/a	
60	3.752	7.504	11.256	15.008	18.760	21.261	25.013	28.765	32.517	36.269	
	2.510	6.054	9.597	13.141	16.684	19.342	22.286	26.429	29.973	33.516	
	n/a	n/a	n/a	n/a	14.056	n/a	n/a	n/a	n/a	n/a	

METERS SQUARED

		Width (mm)									
		305	610	915	1220	1525	1829	2134	2439	2744	3048
Height (mm)	305	0.057	0.114	0.170	0.227	0.284	0.322	0.378	0.435	0.492	0.549
		0.030	0.073	0.115	0.158	0.200	0.232	0.275	0.317	0.360	0.403
		0.054	n/a	n/a	n/a	n/a	n/a	n/a	n/a	n/a	n/a
610	0.126	0.258	0.387	0.516	0.645	0.731	0.861	0.990	1.119	1.248	
	0.081	0.196	0.311	0.426	0.541	0.627	0.742	0.857	0.972	1.087	
	n/a	0.230	n/a	n/a	n/a	n/a	n/a	n/a	n/a	n/a	
915	0.199	0.398	0.596	0.795	0.994	1.127	1.325	1.524	1.723	1.922	
	0.136	0.329	0.521	0.713	0.906	1.050	1.242	1.435	1.627	1.819	
	n/a	n/a	0.516	n/a	n/a	n/a	n/a	n/a	n/a	n/a	
1220	0.276	0.552	0.829	1.105	1.381	1.565	1.842	2.118	2.394	2.670	
	0.182	0.439	0.696	0.953	1.210	1.402	1.659	1.916	2.173	2.430	
	n/a	n/a	n/a	0.917	n/a	n/a	n/a	n/a	n/a	n/a	
1525	0.349	0.697	1.046	1.394	1.743	1.975	2.324	2.672	3.021	3.370	
	0.233	0.562	0.892	1.221	1.550	1.797	20.707	2.455	2.785	3.114	
	n/a	n/a	n/a	n/a	1.306	n/a	n/a	n/a	n/a	n/a	

PERCENTAGE

		Width (inches)									
		12	24	36	48	60	72	84	96	108	120
Height (inches)	12	61.10	61.10	61.10	61.10	61.10	57.72	58.20	58.56	58.84	59.07
		32.50	39.15	41.37	42.48	43.14	41.68	42.27	42.71	43.06	43.33
		58.30	n/a	n/a	n/a	n/a	n/a	n/a	n/a	n/a	n/a
24	67.95	69.48	69.47	69.48	69.47	65.61	66.16	66.58	66.90	67.16	
	43.80	52.80	55.82	57.31	58.22	56.24	57.04	57.64	58.11	58.48	
	n/a	61.94	n/a	n/a	n/a	n/a	n/a	n/a	n/a	n/a	
36	71.33	71.33	71.33	71.33	71.33	67.37	67.93	68.35	68.69	68.95	
	48.87	58.95	62.30	63.98	64.98	62.78	63.67	64.34	64.86	65.27	
	n/a	n/a	61.71	n/a	n/a	n/a	n/a	n/a	n/a	n/a	
48	74.35	74.34	74.34	74.34	74.34	70.21	70.80	71.24	71.59	71.86	
	48.98	59.05	62.41	64.09	65.10	62.89	63.78	64.45	64.97	65.39	
	n/a	n/a	n/a	61.67	n/a	n/a	n/a	n/a	n/a	n/a	
60	75.04	75.04	75.04	75.04	75.04	70.87	71.47	71.91	72.26	72.54	
	50.20	60.54	63.98	65.71	66.74	64.47	65.39	66.07	66.61	67.03	
	n/a	n/a	n/a	n/a	56.22	n/a	n/a	n/a	n/a	n/a	

FLANGED TO DUCT



FEET SQUARED

		Width (inches)									
		12	24	36	48	60	72	84	96	108	120
Height (inches)	12	0.847	1.694	2.541	3.388	4.235	4.800	5.647	6.494	7.341	8.188
	24	1.736	3.472	5.209	6.945	8.681	9.838	11.574	13.311	15.047	16.783
	36	2.487	4.973	7.460	9.946	12.433	14.091	16.577	19.064	21.550	24.037
	48	3.376	6.751	10.127	13.503	16.879	19.129	22.505	25.881	29.257	32.632
	60	4.265	8.530	12.795	17.060	21.325	24.168	28.433	32.698	36.963	41.228

METERS SQUARED

		Width (mm)									
		305	610	915	1220	1525	1829	2134	2439	2744	3048
Height (mm)	305	0.079	0.157	0.236	0.315	0.393	0.446	0.525	0.603	0.682	0.761
	610	0.161	0.323	0.484	0.645	0.806	0.914	1.075	1.237	1.398	1.559
	915	0.231	0.462	0.693	0.924	1.155	1.309	1.540	1.771	2.002	2.233
	1220	0.314	0.627	0.941	1.254	1.568	1.777	2.091	2.404	2.718	3.032
	1525	0.396	0.792	1.189	1.585	1.981	2.245	2.642	3.038	3.434	3.830

PERCENTAGE

		Width (inches)									
		12	24	36	48	60	72	84	96	108	120
Height (inches)	12	84.70	84.70	84.70	84.70	84.70	80.00	80.67	81.18	81.57	81.88
	24	86.80	86.80	86.82	86.81	86.81	81.98	82.67	83.19	83.59	83.92
	36	82.90	82.88	82.89	82.88	82.89	78.28	78.94	79.43	79.81	80.12
	48	84.40	84.39	84.39	84.39	84.40	79.70	80.38	80.88	81.27	81.58
	60	85.30	85.30	85.30	85.30	85.30	80.56	81.24	81.75	82.14	82.46

NOTE:

WP dampers sized for duct openings exceeding 37¾" (959 mm) in height are equipped with a brace at mid-height, to strengthen and maintain air leakage tolerances.



SPX ENGINEERED AIR MOVEMENT

80 Lorne Street
Smiths Falls, ON K7A 5J7, Canada
800 561 3449
tamcodampers.com

TA-FA-1000-1500-TECH-24 | ISSUED 01/2024
© 2024 SPX Engineered Air Movement | All rights reserved
In the interest of technological progress, all products are
subject to design and/or material change without notice.

