

FACE & BYPASS DAMPERS

SERIES

1000 FB, 1500 FB, 9000 FB

TAMCO 



EXPERIENCE TRUE EXCELLENCE IN SERVICE, QUALITY,
AND MAINTENANCE-FREE PERFORMANCE.



Face & Bypass damper uninterrupted linkage

PURPOSE-BUILT DESIGN

- Specifically designed blade extrusion unique to these series.
- Aluminum construction allows for additional strength by extruding internal supports and thicker radii.
- All advantages of aluminum construction and maintenance-free operation retained.
- Dependability and durability of “Dual Bearing System” maintained. (See TAMCO product information for Series 1000, 1500, and 9000 dampers.)

SELECTABLE PERFORMANCE

- Choice of material to suit operating environment.
- Choice of profile: SP – Standard Profile with 6” (152.4 mm) deep blades, or NP – Narrow Profile with 4” (101.6 mm) deep blades.
- Choice of opposed or parallel blade action. (Blade action must be the same for both the Face and for the Bypass sections of any unit.)
- Choice of install type: Installed In Duct, Flanged to Duct, or Extended Rear Flange.

NOTE:

Although TAMCO manufactures Face & Bypass dampers, we recommend that two separate dampers (each operated with their own dedicated actuator) should be ordered wherever possible.

UNINTERRUPTED LINKAGE

- No mechanism to loosen, fail, or omit.
- Transmission of torque, or stroke, is direct and without losses.
- Section connections will not develop undue wear or play.

FACE & BYPASS DAMPER UPGRADE OPTIONS

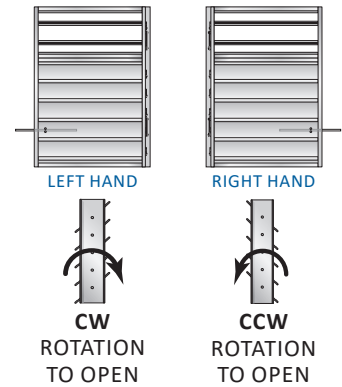
- ET - Elevated Temperature Option, suitable for high heat environments where temperatures may reach as high as 300 °F (149 °C). High temperature resistant bronze-oilite bearings replace all Celcon and polycarbonate bearings. Blade and frame seals are silicone. Available for Series 1000 FB and 1500 FB only.
- MR - Moisture Resistance Option, suitable for applications where dampers are exposed to extended periods of high humidity or high moisture. Stainless steel parts replace all zinc-plated steel hardware of standard face & bypass dampers.
- SW - Salt Water Resistance Option dampers are specifically designed for environments where there is salt spray or salt content in the air and/or where moisture levels are elevated. Damper blades, frames and aluminum hardware are all clear anodized. Blade and frame seals are silicone and all zinc-plated steel hardware is replaced with stainless steel hardware.

CONFIGURATION 1
SINGLE-SECTION DAMPER

Overall Duct Sizes	A x B
MINIMUM SIZE:	
Installed in Duct:	
7.5"w x 12.5"h	(191 mm x 318 mm)
Flanged to Duct:	
6"w x 10.5"h	(153 mm x 267 mm)
MAXIMUM SIZE:	
25 ft ²	(2.32 m ²)
60"w x 60"h	(1524 mm x 1524 mm) or
48"w x 75"h	(1220 mm x 1905 mm)
<i>Limiting section width to 48" (1220 mm) allows height to increase to 75" (1905 mm) per section.</i>	

Up to 25 ft² (2.32 m²):
1 motor location. Operated with a minimum of 1 motor, direct-coupled to damper drive rod.

UNLESS OTHERWISE SPECIFIED, SINGLE-SECTION FACE & BYPASS DAMPERS ARE SUPPLIED RIGHT HAND.



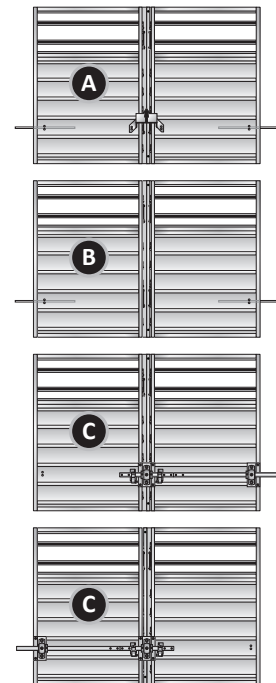
CONFIGURATION 2
HORIZONTAL TWO-SECTION DAMPER

Overall Duct Sizes	A x B
MINIMUM SIZE:	
Installed in Duct:	
Over 60"w x 12½"h	(over 1524 mm x 318 mm)
Flanged to Duct:	
Over 60"w x 10½"h	(over 1524 mm x 267 mm)
MAXIMUM SIZE:	
50 ft ²	(4.65 m ²)
120"w x 60"h	(3048 mm x 1524 mm) or
96"w x 75"h	(2439 mm x 1905 mm)
<i>Limiting section width to 48" (1220 mm) allows height to increase to 75" (1905 mm) per section.</i>	

A. Up to 30 ft² (2.79 m²):
2 motor locations. Damper to be ordered with a damper jumper. Operated with a minimum of 1 motor, direct-coupled to either the right or left section's drive rod.

B. Over 30 ft² (2.79 m²) up to 50 ft² (4.64 m²):
2 motor locations. Operated with a minimum of 1 motor, direct-coupled to each section's drive rod: left and right. Minimum of 2 actuators.

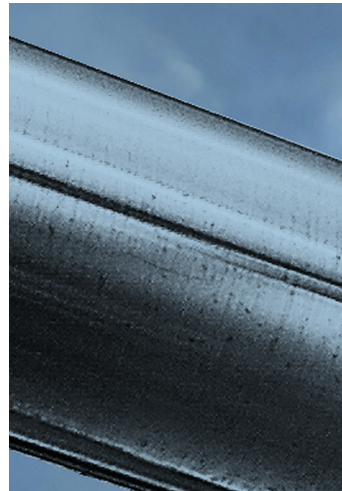
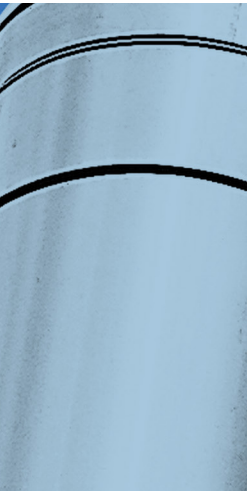
C. Over 30 ft² (2.79 m²) up to 50 ft² (4.64 m²):
1 motor location. Damper to be ordered with a horizontal jackshaft. Operated with a minimum of 1 motor, connected to jackshaft. Mounting holes are pre-drilled to allow jackshaft to be installed on either the left or the right.



NOTE:

- All data based on remaining within allowable maximum blade pressure as shown in the Blade Design Pressure Limitations charts.
- To reduce pressure drop, use Flanged to Duct or Extended Rear Flange install types for sizes under 9 ft² (.83 m²).
- Suitable for operation in breathable air environments within stated temperature range.
- SP dampers sized for duct openings exceeding 37¼" (959 mm) in height and NP dampers sized for duct openings exceeding 35¼" (908 mm) are equipped with a brace at mid-height to strengthen and maintain air leakage tolerances.

FACE & BYPASS



SPX ENGINEERED AIR MOVEMENT

80 Lorne Street
Smiths Falls, ON K7A 5J7, Canada
800 561 3449
tamcodampers.com

TA-FB-24 | ISSUED 01/2024
© 2024 SPX Engineered Air Movement | All rights reserved
In the interest of technological progress, all products are
subject to design and/or material change without notice.

