

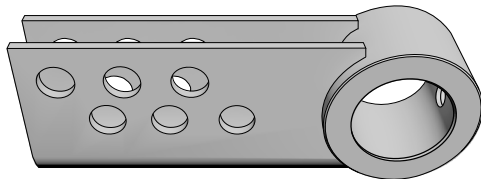
MOUNTING ACCESSORIES

FOR PNEUMATIC ACTUATORS

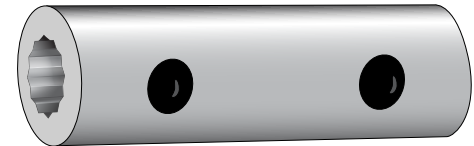
engineering data
and specifications

SERIES 1000, 1000 SM, 1500, 9000, 9000 BF, 1000 FB, 1500 FB, 9000 FB

JACKSHAFT MOUNTING
CLEVIS CRANK ARM
(PART # PN-0006)



ADAPTOR-
HEX ROD TO 1" DIAMETER
(PART # HA-1100)



JACKSHAFT MOUNTING
(EXTERNAL)



REQUIRED ACCESSORIES

- The Jackshaft Mounting Clevis Crank Arm, designed to accommodate a 1" (25.4 mm) diameter shaft, must be ordered to replace the standard clevis crank arm supplied with Siemens pneumatic actuators. (Part # PN-0006)
- The Modified Mounting Plate is designed to accommodate a 1" (25.4 mm) diameter shaft, and must be ordered to replace the standard mounting plate supplied with Siemens actuators. (Part # PN-0038)

DIRECT-COUPLED MOUNTING
(EXTERNAL)



REQUIRED ACCESSORIES

- The Jackshaft Mounting Clevis Crank Arm, designed to accommodate a 1" (25.4 mm) diameter shaft, must be ordered to replace the standard clevis crank arm supplied with Siemens pneumatic actuators. (Part # PN-0006)
- Adaptor - Hex rod to 1" (25.4 mm) diameter. (Part # HA-1100)

NOTE:

Refer to TAMCO Aluminum Damper Installation Guidelines (Motor Mounting Methods), for more information regarding pneumatic actuator installation.

MOUNTING ACCESSORIES - PNEUMATIC ACTUATORS

ENGINEERING DATA AND SPECIFICATIONS

SPX ENGINEERED AIR MOVEMENT

80 Lorne Street
Smiths Falls, ON K7A 5J7, Canada
800 561 3449
tamcodampers.com

TA-MM_PN-TECH-24 | ISSUED 01/2024
© 2024 SPX Engineered Air Movement | All rights reserved
In the interest of technological progress, all products are
subject to design and/or material change without notice.

